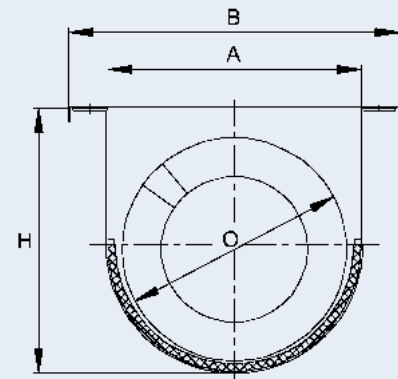
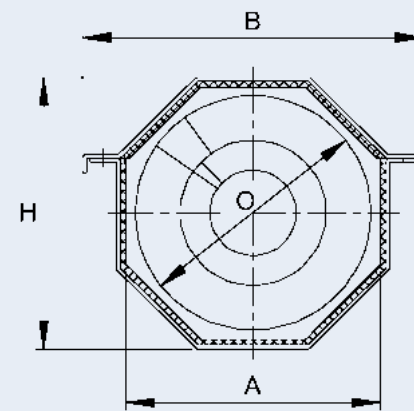


Technical specifications



Standard U-trough design sizes (mm)

	A	B	H	O
U200	200	304	205	160
U250	250	354	260	215
U320	320	424	329	280
U355	355	459	364	315
U420	420	545	421	365
U500	500	625	499	440
U620	620	749	609	480



Standard vertical design sizes (mm)

	A	B	H	O
OK200	200	290	207	160
OK250	250	340	257	215
OK320	320	410	327	280
OK355	355	445	362	315
OK420	420	514	431	365
OK500	500	594	511	440
OK620	620	714	631	480

SPIRAC Conveyor specifications

Spiral

- High Tensile Micro Alloyed Steel
- 304 & 316 Stainless Steel
- Bisalloy
- Special coatings available

Liners

- DURAFLO SPX
- Polyethylene
- Bisalloy
- Stainless Steel
- Duplex Stainless Steel

Drive unit

- Direct coupled
- Variable speed option

U Troughs

- Fully enclosed with bolted or quick release lids
- Inspection Ports
- 304 & 316SS, Duplex SS, Mild Steel

Seals

- Gland Packing
- Labyrinth
- Mechanical

Other options

- Supports
- Electronic shearpins
- Automatic controls
- Motion sensors
- Limit switches
- Knife gates

NOVEMBER 2002



SPIRAC

First in spiral
conveying technology

**SPIRAC shaftless
screw conveyors**

SPIRAC SHAFTLESS
SCREW CONVEYORS

HORIZONTAL

VERTICAL

LIVE BOTTOMS



**SPIRAC
Engineering
Pty Ltd**

HEAD
OFFICE

2 Kalmia Road
Bibra Lake
WA 6163
Australia

PO Box 1216
Bibra Lake DC
WA 6965
Australia

Telephone +61 8 9434 2127
Facsimile +61 8 9434 2128
Email spirac@spirac.com.au
www.spirac.com

NSW
OFFICE

32/8 Victoria Ave
Castle Hill
NSW 2154
Australia

PO Box 6643
Baulkham Hills BC
NSW 2153
Australia

Telephone +61 2 9680 9381
Facsimile +61 2 9680 9382
Email spirac@spirac.com.au
www.spirac.com

ALL INFORMATION CONTAINED IN THIS DOCUMENT IS SUBJECT TO CHANGE WITHOUT NOTICE



SPIRAC provides customised conveying equipment that meets the solids material handling requirements of industries all over the world. Through innovative design and 30 years of experience in leading-edge conveying technology, SPIRAC is able to adapt easily to changing industry needs.

SPIRAC's shaftless screw conveyors combine the unparalleled original shaftless screw technology with low-maintenance and efficient system design.

SPIRAC Shaftless Conveyors

The unique features of the SPIRAC Shaftless Conveying systems present new possibilities when designing materials handling systems.

A system of SPIRAC horizontal, inclined and vertical shaftless conveyors with no intermediate or end bearings, low rpm's and low power usage is a space-saving, extremely reliable conveying option. Maintenance is significantly reduced when compared to traditional conveying methods. The elimination of a central shaft allows a much higher fill rate resulting in lower rpm's, more efficient conveying and consequently less wear and power usage.

Shaftless spiral

The shaftless spiral allows higher filling rates and lower rpm's resulting in less wear and consequently less maintenance and down time. Although the spirals can be made of many different materials, the primary material is a special steel from Sweden which has mechanical properties that result in the SPIRAC spiral having a very high tensile strength.

No intermediate or end bearings

Eliminating intermediate and end bearings reduces major maintenance work. It also allows efficient and direct transfer into another conveyor – horizontal, inclined or vertical.

- > **VIRTUALLY MAINTENANCE FREE**
- > **LOW POWER USAGE**
- > **LESS DOWN TIME**
- > **COST SAVINGS**
- > **LESS WEAR**
- > **SPACE SAVING**

Liners

SPIRAC's proprietary liner, DURAFLO SPX, is designed specifically to ensure long life. The DURAFLO SPX liner has a built-in wear indicator with a snap-in, snap-out feature enabling easy replacement.

Totally enclosed troughs

SPIRAC conveyors are totally enclosed. There is no spillage of the material being conveyed and odours are completely contained.

Direct drive

SPIRAC's direct-drive design allows a clean and efficient transmission without the maintenance required with belt and chain drives.

A DIRECT TRANSFER INTO A VERTICAL CONVEYOR OR ANOTHER HORIZONTAL CONVEYOR IS A SPACE-SAVING BENEFIT OF SPIRAC SHAFTLESS CONVEYORS. THE ELIMINATION OF END BEARINGS MAKES THIS TRANSFER METHOD VERY EFFICIENT.

