



**SPIRAC**<sup>®</sup>  
Solid Handling Solutions

## BANDGUARD™ CENTRE FLOW BAND SCREEN



### FEATURES AND BENEFITS

- Screen widths of up to 4m (13ft) and depths of 20m (65ft) can be provided.
- Carry over and hairpinning prevented.
- Plastic panels with 2mm to 6mm diameter holes.
- Screen capture ratios have been independently certified by UKWIR – NSEF 3mm Ø @ 95% and 6mm Ø @ 85%.
- Stainless steel and carbon steel construction.
- Available with integral washing compactor.
- Highly efficient side sealing arrangement.
- All maintenance can be undertaken above coping level.
- 200mm, 300mm and 450mm chain options.
- Flow range capacity 100 l/s (2.28 MGD) to 2000 l/s (45.65 MGD).



[WWW.SPIRAC.COM](http://WWW.SPIRAC.COM)

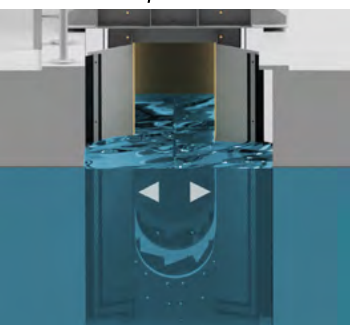
BANDGUARD™ is a high efficiency dual flow traveling fine screen used in inlet works of a wastewater treatment plant. The high efficiency fine screen prevents screenings accumulation and its exceptional capture rate significantly reduces maintenance costs in downstream equipment.

With the BANDGUARD™ screening is achieved by passing the sewage through a vertical band shaped screen curtain. It comprises an assembly of plastic perforated panels, clipped and fastened into stainless steel frames which are fastened to stainless steel conveyor chains that form two endless loops.



Side seal & panel screen curtain

The screenings enter the centre of the screen, inside of the screen curtain where solids are retained and transported out of the flow by driving the band, moving the dirty panels from the screening zone to the panel cleansing area.



Wastewater flow

The band is sprocket driven via a motor and gearbox. A spray bar fed by final or primary effluent is used to clean dirty panels before the panels are re-submerged. The cleaning system is orientated to achieve full panel cleaning whilst depositing all debris in the internal launder system, which feeds out through the side of the screen.

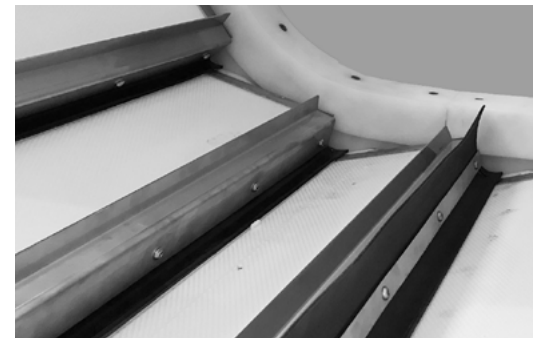


Spray bar to clean panels

Each panel has replaceable side seals manufactured from UHMWPE fitted between the chain and panel to effect a close tolerance seal with the chain guide fitted to the screen structure.



The main structural side plates are designed and manufactured for strength and rigidity.



The high strength chains run in steel and UHMWPE guides and are driven by sprockets attached to the head shaft running in adjustable bearing units.

The drive is from a close coupled motor and gearbox. Variable or Dual speed drives are available as options and the screens can be supplied to suit ATEX Zone 1 environments

The BANDGUARD™ is fully guarded by covers fastened to the main screen structure thus encasing odours and wash water aerosol. The screen can be supplied with odour extraction pipework flanges where requested

The BANDGUARD™ can be inched forward and reverse, in case of mechanical stoppage.



TALK TO US ABOUT YOUR SCREENING NEEDS.  
Our wide range of screens guarantees we have the right solution for you.

AUSTRALIA  
SPIRAC Pty Ltd

Western Australia (Perth)  
+61 8 9434 0777

info@spirac.com.au

NETHERLANDS  
SPIRAC BV

Maarheeze  
+31 495 430 203

info@spirac.nl

SWEDEN  
SPIRAC AB

Limhamn  
+46 40 36 22 00

info@spirac.se

UNITED KINGDOM  
SPIRAC Limited

Banbury  
+44 1 295 270 335

info@spirac.co.uk

USA  
SPIRAC (USA) Inc

Newnan GA  
+1 770 632 9833

sales@spirac.com